

Total Patient Encounters

785,563

7th largest pediatric health care provider in the nation

Patient Encounters Per Main Location

454,243	140,947	181,804	8,569
Dallas	Plano	Pediatric Group	Southlake



342,708

Ambulatory Visits



28,355

Surgeries



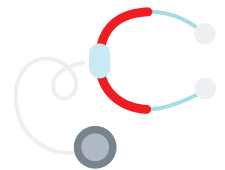
79,515
Ancillary Visits

595,062
Outpatient Visits



6,110
Employees

1,006
Medical and Dental Staff



562
Licensed Beds



253,308

Unique Patients

11,000
NICU patient days



172,839

Total ER Visits

129,756	43,083
Dallas	Plano



2.6 million
Square footage

\$51 million

Charity Care*

*retail value of charity care



\$2.7 billion

Gross Revenue

\$151 million

Community Benefits

